

# TRANSCEND<sup>®</sup>

Sleep Apnea Therapy SYSTEM

## Sleep Apnea Therapy System User Manual



# Notices

---



Revised	Transcend Sleep Apnea Therapy System User Manual 103084 Rev J Published January 30, 2013 and supersedes all previous versions.
Notice	The information contained in this document is subject to change without notice.
Trademark	Somnetics® and Transcend® are registered trademarks of Somnetics International, Inc.; all rights reserved.
Copyright	© Copyright 2013 Somnetics International, Inc.; all rights reserved.

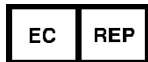
## Contact Somnetics International, Inc.

---

Corporate headquarters	Somnetics International, Inc.
Email	info@somnetics.com
Web	<a href="http://www.mytranscend.com/">http://www.mytranscend.com/</a>
Telephone	651.621.1800
Toll-free telephone	877.621.9626
Fax	651.204.0064



Somnetics International, Inc.  
33 5th Avenue NW, Suite 500  
New Brighton, Minnesota 55112 USA



Authorized Representative (MDD 93/42/EEC)  
EUROM-Service Ltd.  
Helmholtzstr. 2  
10587 Berlin, Germany  
Telephone +49303180453

**Rx Only**

## About this user manual

---

**Note** This user manual is designed to be duplex-printed (printed on both sides of each sheet). If not printed in this manner, you will find blank pages in your printout.

**Note** For purposes of this manual, some software screen images may differ from the actual screen display. This is only for clear printing and on-screen display of this manual.

---

# Contents

---

Introduction .....	7
Indications for use .....	7
Contraindications .....	7
Precautions for use.....	7
<i>Warnings</i> .....	8
<i>Cautions</i> .....	9
Symbols .....	10
Components of the Transcend System.....	11
What's not included (all sold separately) .....	12
Description of Transcend System components .....	13
Transcend Device.....	13
<i>Control panel</i> .....	13
<i>Power connection jack and USB port</i> .....	14
<i>Air Inlet Filter</i> .....	15
Assembling the Transcend System.....	16
Assembling the Transcend System .....	16
Powering the Transcend .....	17
Using the Multi-plug Universal Power Supply .....	18
Using the Transcend P <sub>4</sub> or P <sub>8</sub> Battery .....	19
<i>Using the Transcend P<sub>4</sub> Overnight™ or P<sub>8</sub> Multi-night™ Battery with AC line power</i> .....	19
<i>Using the Transcend P<sub>4</sub> Overnight™ or P<sub>8</sub> Multi-night™ Battery with the Transcend Mobile Power Adaptor</i> .....	20
<i>Explanation of the optional Transcend P<sub>4</sub> Overnight™ and P<sub>8</sub> Multi-night™ Battery LED lights</i> .....	21
<i>Charging the Transcend P<sub>4</sub> Overnight™ or P<sub>8</sub> Multi-night™ Battery</i> .....	21
<i>Using the optional chest or arm strap with a Transcend P<sub>4</sub> Overnight™ or P<sub>8</sub> Multi-night™ Battery</i> .....	22
Using the Transcend Mobile Power Adaptor (MPA1) .....	23
Using the Transcend .....	24
Standard user modes .....	24
Starting therapy .....	25
Using the ramp function.....	25
Ending therapy .....	26
Drying mode .....	26
Replacing the Filter Media .....	27
Caring for your Transcend and components.....	28
Cleaning the exterior .....	28
Cleaning of accessories.....	29
Cleaning the Filter Media and filter frame .....	30

---

Fault, alert and reminder codes .....	32
Fault codes.....	32
Alert codes.....	33
Filter Media change reminder.....	33
Troubleshooting.....	34
Appendix: Part numbers .....	34
Disposable parts .....	35
Accessories .....	35
Replacement parts .....	35
Appendix: Specifications .....	37
Transcend .....	37
AC power supply PSA2.....	37
Mobile power adaptor (optional) — MPA1 .....	37
Batteries (optional) — P <sub>4</sub> Overnight™ and P <sub>8</sub> Multi-Night Battery.....	37
Transcend performance .....	38
Manufacturer's declaration .....	39
<i>Electromagnetic emissions</i> .....	39
<i>Electromagnetic immunity</i> .....	39
<i>IEC 60601-1 compliance</i> .....	41
Appendix: Limited warranty .....	43



# Introduction

---

The Transcend Sleep Apnea Therapy System (Transcend) provides positive airway pressure to users in the range of 4 to 20 cmH<sub>2</sub>O as prescribed by the clinician. Buttons and LED lights facilitate control and provide operational feedback. A DC power jack and a USB port are also incorporated into Transcend.

## Indications for use

---

The Transcend Sleep Apnea Therapy System provides positive airway pressure for treatment of obstructive sleep apnea (OSA) in adults weighing over 66 pounds (30 kg). The device is intended for home and hospital/institutional use.

## Contraindications

---

Transcend is contraindicated in patients with the following conditions:

- Bullous lung disease
- Pathologically low blood pressure
- Pneumothorax or pneumomediastinum.
- Pneumocephalus has been reported in some users using nasal PAP.

Caution should be used when prescribing PAP for susceptible users such as those with any of these conditions:

- Cerebral spinal fluid (CSF) leaks
- Abnormalities of the cribriform plate
- A prior history of head trauma
- Pneumocephalus

## Precautions for use

---

This section describes the warnings and cautions associated with use of the Transcend Sleep Apnea Therapy System. The following guidelines apply to this document:

---

**Warning** Indicates the possibility of serious injury or death to yourself or others.

---

**Caution** Indicates the possibility of minor injury or damage to the equipment.

---

**Note** Indicates a tip, explanation or feature to aid in understanding, or efficient operation of the device.

---

## Warnings

---

- Do not allow water to enter this device. Transcend should not be exposed to environmental conditions where the system may get wet.
  - This device is not intended for life support.
  - Transcend must be set up and adjusted by a trained provider before being used for therapy ramp and pressure.
  - The air temperature produced by this device can be as much as 10°F higher than the temperature of the room. Exercise caution if the room temperature is warmer than 90°F (32°C).
  - Do not block or otherwise obstruct the exhalation ports of the interface. Follow the manufacturer's instructions included with your interface.
  - This equipment is not suitable for use with oxygen or in the presence of a flammable anesthetic mixture with air or oxygen, or with nitrous oxide.
  - The Transcend System is only to be used with the supplied or recommended accessories. Use of accessories not recommended may result in increased electromagnetic emissions or decreased electromagnetic immunity of the PAP system and may be potentially unsafe.
  - The Transcend System is not defibrillation proof.
  - Do not attempt to sterilize Transcend.
  - The system is intended for single patient use.
  - The device should be used only with masks and connectors recommended by Somnetics or a health care professional. A mask should not be used unless the device is turned on and is properly delivering ramp or therapy pressure. The exhalation port(s) associated with the mask should never be blocked. Explanation of the Warning: The device is intended to be used with masks or connectors specifically designed to have exhalation ports to allow continuous flow of air out of the mask. When the device is turned on and functioning properly air flow from the device flushes the exhaled air out through the mask exhalation port. When the device is not operating, however, fresh air will not be provided through the mask and exhaled air may be rebreathed. Rebreathing of exhaled air for longer than several minutes can, in some circumstances, lead to suffocation.
-



## Cautions

---

- Federal law (United States) restricts this device to sale by, or on the order of, a physician.
  - Power the Transcend System only with the Somnetics-supplied power supplies, mobile power adaptor, or batteries. See **Appendix: Part Numbers**.
  - Discontinue use of the Transcend and contact your physician if respiratory or skin irritations occur.
  - Do not introduce objects into the Transcend air inlet or air outlet.
  - Inspect the power cord for signs of wear or damage before each use. Replace the power cord if necessary.
  - Somnetics recommends replacing the air delivery tubing (hose) after every three months of use.
  - To protect the environment, some parts and accessories of the Transcend System, including optional batteries, must be disposed of in accordance with local regulations.
-

# Symbols

---



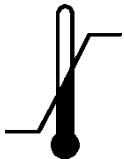
Attention: Consult accompanying documents



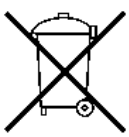
Type BF Applied Part



ETL Seal of Approval demonstrating quality, safety and professional manufacturing of medical product



Upper and lower temperature limits



Separate collection for electrical and electronic equipment per EC Directive 2002/96/EC. – Waste Electrical and Electronic Equipment (WEEE)



Consult instructions for use



Non-Condensing

Upper and lower humidity limits

**Rx Only**

Prescription only. U.S. federal law restricts this device to sale by or on the order of a physician or properly licensed practitioner.

---

## Components of the Transcend System

---

Begin by unpacking all items from the Transcend travel bag and inspect them to ensure they were not damaged during shipment. Report any missing or damaged items to the home healthcare provider that provided the Transcend System to you.



- Transcend CPAP
  - Standard 6-foot hose (Note: not compatible with optional H<sub>6</sub>B or H<sub>9</sub>M Waterless Humidification Systems)
  - Universal hose adaptor
  - Multi-plug universal power supply set (PSA2)
  - Travel bag
  - CD containing software
  - CD containing user manuals
  - Quick start guide
  - USB Cable
-

## What's not included (all sold separately)

---

- H<sub>6</sub>B Waterless Humidification System
  - H<sub>9</sub>M Waterless Humidification System
  - Nasal seal (mask cushion for use with H<sub>6</sub>B or H<sub>9</sub>M Waterless Humidification Systems)
  - Transcend Mobile Power Adaptor
  - Transcend P<sub>4</sub> Overnight Battery
  - Transcend P<sub>8</sub> Multi-night Battery
  - Battery pouch and chest or arm strap system
  - Transcend Base Station
  - Transcend LCD Programming Base Station
  - Transcend Portable Solar Charger (to be used as an alternative charging source for Transcend P<sub>4</sub> and P<sub>8</sub> batteries)
-

## Description of Transcend System components

### Transcend Device

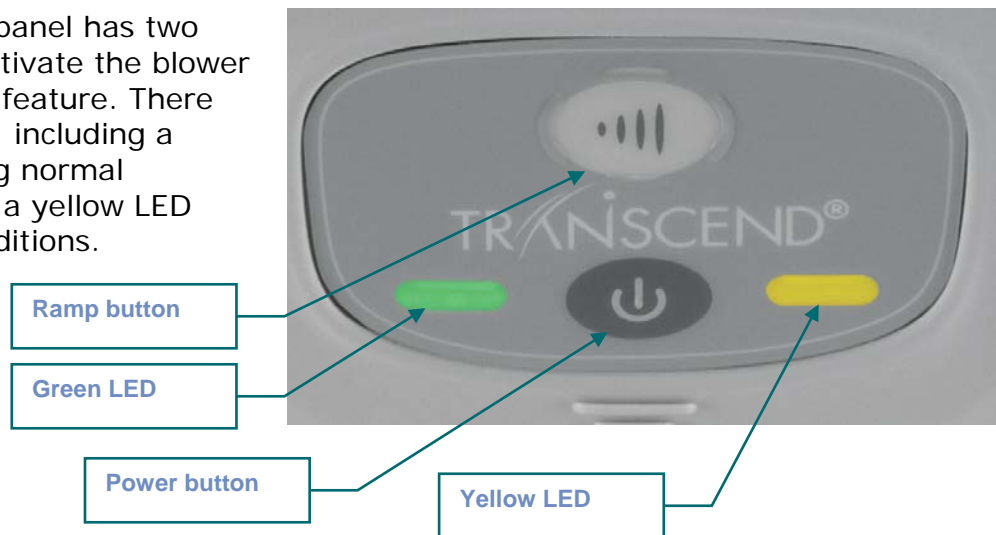
---

Transcend comes ready to generate and regulate continuous positive airway pressure therapy for delivery to the interface. An external power source connects to the Transcend to supply power to the device.

#### Control panel

---

The Transcend control panel has two pushbuttons used to activate the blower and the pressure ramp feature. There are also two LED lights, including a green LED for indicating normal operational modes and a yellow LED that indicates fault conditions.



## Power connection jack and USB port

---

The power jack accepts the barrel plug of the output cable from a DC power source to operate the Transcend.

A variety of power sources may be used to power the Transcend. An AC to DC converting power supply is provided with your device and should be used when powering the device by line (wall outlet) power.

An optional mobile power adaptor connects to a DC power outlet, such as that found in an automobile, truck, RV, boat, or similar vehicle.

Optional Transcend battery packs are also available to power the Transcend.

### *USB port*

---

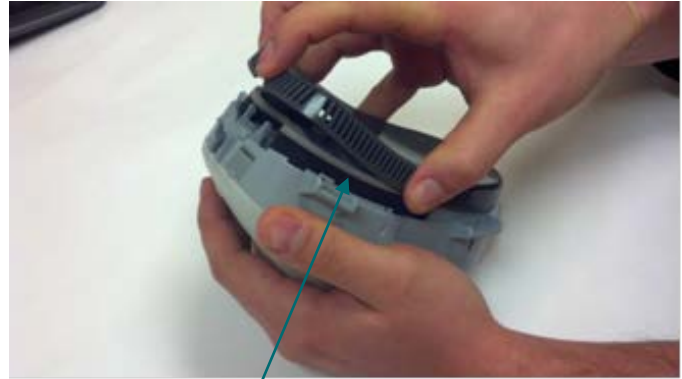
A mini-AB USB port is provided for direct data exchange between the Transcend and a computer via a USB data cable. This interface allows the clinician to configure the Transcend for prescription pressure, ramp settings and settings and provides access to therapy compliance information that can be viewed by the user and emailed to the clinician.



## Air Inlet Filter

---

During therapy operation ambient air is drawn into the Transcend through an Filter Media. The Filter Media should be cleaned at least weekly according to the instructions provided in this User Manual and replaced minimally after 6 months of use. Replace more frequently as desired.



Filter Media

# Assembling the Transcend System

---

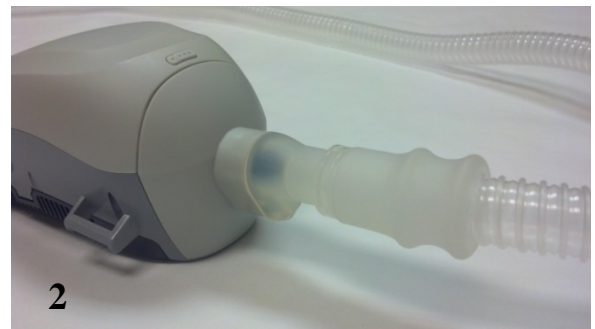
The mask interface connects to Transcend via the air supply tube. One end of the air supply tube attaches to the outlet port of Transcend via the Universal Hose Adaptor. The opposite end of the tube attaches to a mating fitting on the interface.

## Assembling the Transcend System

---

Follow these steps to assemble the Transcend System:

1. Attach the Universal Hose Adaptor to the 6-foot air supply tube (Figure 1).
2. Connect the mask to the opposite end of the air supply tube.
3. Connect the Universal Hose Adaptor to Transcend making sure it is fully seated into the CPAP (Figure 2).
4. Plug the power supply into Transcend as shown in Figure 3.
5. Connect power supply to a wall outlet.





## Powering the Transcend

---

There are three choices for powering your Transcend device:

- **Using the Multi-plug Universal Power Supply (PSA2)**
  - **Using the optional Transcend P<sub>4</sub> Overnight (BAT4) or P<sub>8</sub> Multi-Night (BAT8) Battery**
  - **Using the optional Transcend Mobile Power Adapter (MPA1)**
-

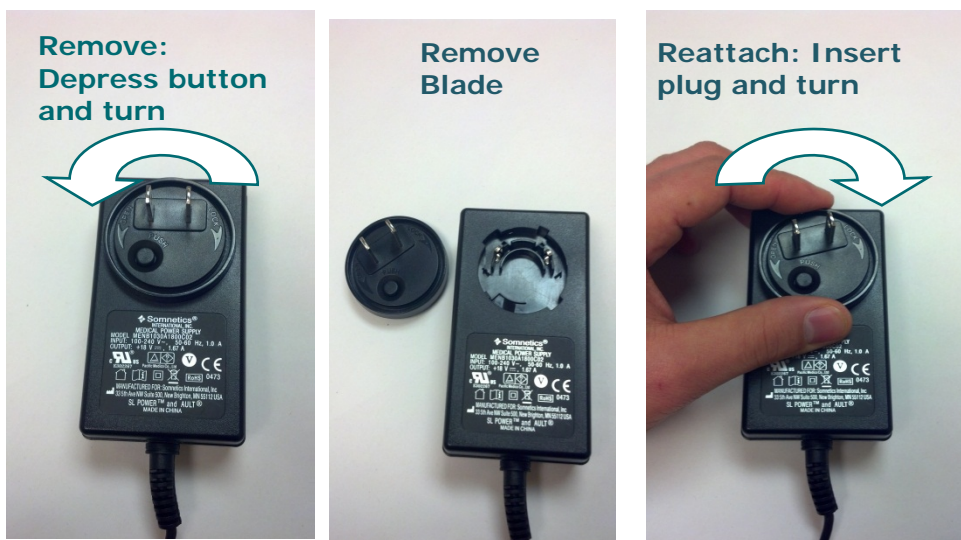
## Using the Multi-plug Universal Power Supply (PSA2)

The Multi-plug Universal Power Supply (PSA2) includes a Changeable Plug Pack containing three (3) exchangeable plugs suitable for use in most countries around the world.

1. Determine which plug blade is required to power the device based upon the outlet style.
2. If the correct plug blade is not already attached to the Power Supply remove the attached plug by depressing the button on the detachable plug blade and turning the plug in a counterclockwise motion until it releases from the power supply.
3. Attach the desired plug blade by lining up the protruding tabs on the back of the plug blade with the gaps on the Power Supply and gently pushing the blade into the slot. Turn the blade clockwise until it clicks into place. You should hear an audible click.
4. Insert the barrel connector of power supply into power jack on the back of the Transcend device.
5. Insert the other end of the power supply into an AC line power outlet.
6. The Transcend power-up LED flash sequence should initiate. Once the power-up LED flash sequence is complete the LED lights will turn off. This sequence indicates that power is being supplied to the Transcend and that it has successfully entered Standby Mode.

**Note** Use only the Somnetics-supplied Universal Power Supplies. Do not use a power converter or voltage transformer with the PSA2 Universal Power Supply.

**Note** Make certain that the plug attachment is fully secured to the Power Supply before inserting the power supply into the wall outlet.



## Using the Transcend P<sub>4</sub> Overnight or P<sub>8</sub> Multi-Night Battery (BAT4 or BAT8)

---

The Transcend P<sub>4</sub> Overnight and P<sub>8</sub> Multi-Night Batteries are optional power sources for Transcend. To use, connect the P<sub>4</sub> or P<sub>8</sub> battery outlet cable to the Transcend by inserting the barrel connector into the power jack on the Transcend. Be sure the power-up LED flash sequence completes indicating that power is being supplied to the Transcend and that it has successfully entered Standby Mode.

---

**Note** Fully charge the battery before the first use. Follow the battery charging instructions provided in this User Manual. Do not connect the battery to the Transcend during initial charge.

**Note** Use the battery in-line with the AC power supply when possible. Connecting the battery in-line with the AC power supply allows the battery to charge during therapy and provides backup power to provide uninterrupted therapy in the case of a power outage.

---

### Using the Transcend P<sub>4</sub> Overnight or P<sub>8</sub> Multi-Night Battery in conjunction with AC line power

---

1. Insert the barrel plug from the Universal AC Power Supply into the battery.
  2. Insert the barrel plug of the battery into the Transcend power jack so that the plug and cord face upward.
  3. Plug the Universal AC Power Supply plug into AC line power.
  4. The Transcend power-up LED flash sequence should initiate. Once the power-up LED flash sequence is complete the LED lights will turn off. This sequence indicates that power is being supplied to the Transcend and that it has successfully entered Standby Mode.
-

---

## Using the Transcend P<sub>4</sub> Overnight or P<sub>8</sub> Multi-Night Battery in conjunction with the Transcend Mobile Power Adaptor

---

**Note** Use the battery in-line with the Mobile Power Adaptor when possible. Connecting the battery in-line with the Mobile Power Adaptor allows the battery to charge during therapy and provides backup power to provide uninterrupted therapy in the case of a power outage.

---

1. Insert the barrel plug of the Mobile Power Adaptor into the battery.
2. Insert the barrel plug of the battery into the Transcend power jack so that the plug and cord face upward.
3. Plug the Mobile Power Adaptor into the mobile power receptacle.
4. The Transcend power-up LED flash sequence should initiate. Once the power-up LED flash sequence is complete the LED lights will turn off. This sequence indicates that power is being supplied to the Transcend and that it has successfully entered Standby Mode.

---

## Explanation of the optional Transcend P<sub>4</sub> Overnight and P<sub>8</sub> Multi-Night Battery LED lights

---

- Red LED light: A steady red light signifies a fault with the battery. Do not use or charge the battery when the red LED light is showing. Contact the home healthcare provider that provided the battery to you for a replacement.
  - Yellow LED light: Indicates the battery is charging.
  - Green LED light: Indicates the battery is fully charged.
- 

**Note** The battery will show a red LED light for two seconds when it is first plugged in.

**Note** The battery will show a yellow or green LED light when it is used in-line with the Universal AC Power Supply or Mobile Power Adaptor indicating its charge level.

**Note** The battery will show no LED light when it is used as the sole power source to power the Transcend.

---

---

## Charging the Transcend P<sub>4</sub> Overnight or P<sub>8</sub> Multi-Night Battery

---

**Note** Battery life varies depending on the pressure setting and breathing patterns.

**Note** Charge the battery fully before the first use. Do not connect the Battery to Transcend during the initial charge.

---

---

**Note** To maintain maximum battery performance Somnetics recommends using the Battery in-line with the AC Power Supply or Mobile Power Adaptor during therapy even if the battery is fully charged.

---

- Connect the power outlet barrel connector from the Universal Power Supply or Mobile Power Adaptor to the power connection jack on the P<sub>4</sub> or P<sub>8</sub> Battery.
  - Connect the Universal Power Supply or Mobile Power Adaptor to a power source.
  - A full battery charge is indicated when the LED light on the Battery turns from yellow to green.
  - Charge time for a fully discharged Battery may be up to five (5) hours for the P<sub>4</sub> Overnight Battery and up to eight (8) hours for the P<sub>8</sub> Multi-Night Battery.
-

## Using the optional chest or arm strap with a Transcend P<sub>4</sub> Overnight or P<sub>8</sub> Multi-Night Battery

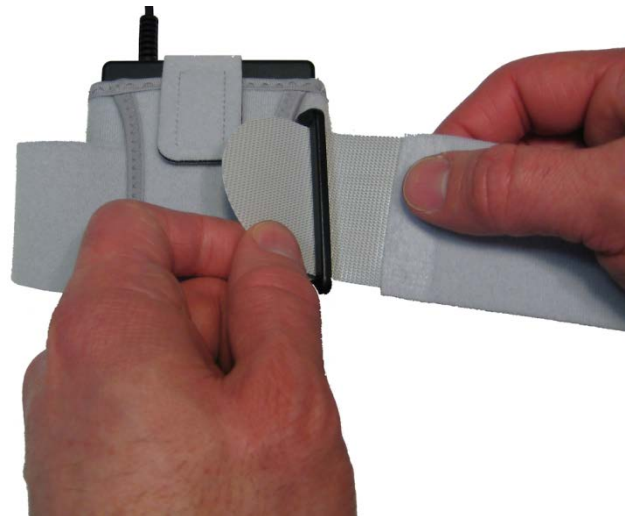
---

Slide battery into the battery pouch and attach the Velcro strap to secure.

Insert the buckle through the loop of the battery pouch with the Velcro facing towards the battery pouch.

With the pouch loop facing outward, wrap the strap around the chest or arm and thread the end of the strap through the buckle.

Continue to pull the strap through the buckle and secure the Velcro to the strap. Place pouch on arm and adjust strap as needed for a comfortable fit.



## Using the Transcend Mobile Power Adaptor (MPA1)

---

Transcend may be powered with an optional Mobile Power Adaptor. The Mobile Power Adaptor is supplied with two cables: one to connect the MPA1 to the Transcend device, and the other to connect the MPA1 to a mobile power receptacle

---

**Note** Use only the Somnetics-supplied Transcend Mobile Power Adaptor.

---

1. Connect both cables to the base of the Mobile Power Adaptor.
  2. Insert the barrel connector of the MPA1 output cable to the power jack of the Transcend.
  3. Insert the plug connector into the mobile power receptacle (e.g. cigarette lighter outlet).
  4. The Transcend power-up LED flash sequence should initiate. Once the power-up LED flash sequence is complete the LED lights will turn off. This sequence indicates that power is being supplied to the Transcend and that it has successfully entered Standby Mode.
- 

**Note** Make certain that the cables are securely connected to the Mobile Power Adaptor and to the power jack on the back of the Transcend. It may be necessary to unplug the cables and reconnect to ensure a good connection.

---

## Using the Transcend

---

The control panel of the Transcend has two pushbuttons that activate the blower and initiate the pressure ramp feature. There are also two LED lights, including a green LED for indicating normal operational modes and a yellow LED for indicating fault conditions. The Transcend operational status is displayed by LED illumination states.

When a power source is connected to the device the Transcend power-up LED flash sequence should initiate. Once the power-up LED flash sequence is complete the LED lights will turn off. This sequence indicates that power is being supplied to the Transcend and that it has successfully entered Standby Mode. During therapy delivery, the LED lights remain off to avoid disturbing the patient and/or bed partner.

---

**Note** If the Transcend loses power while delivering therapy it will resume delivering therapy as soon as power is restored and you press the power button. The device will repeat the power-up LED flash sequence prior to the blower restarting.

---

## Standard user modes

---

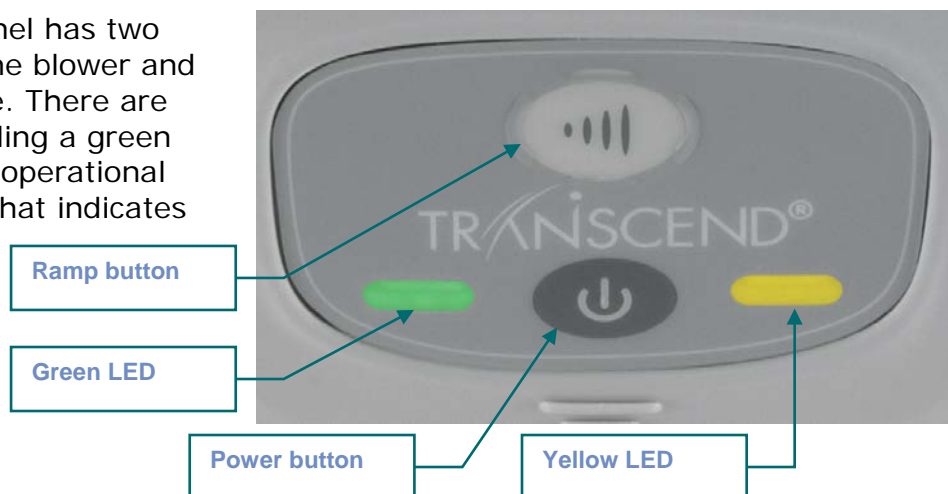
Normal operation consists of four modes:

- Off** When the device is not connected to a power source the device is off. Control panel LEDs are both off.
  - Standby** When power is applied to the device it completes the power-up LED sequence and enters Standby Mode. Standby Mode is also initiated by pressing the power button when the device is in On Mode or if the mask is removed while in On Mode. As long as power is supplied to the device it will remain in Standby Mode until On or Drying Mode is initiated.
  - On** When in On Mode the blower is working and regulated device therapy pressure is being generated. The LED lights remain off. On Mode is initiated by pressing the power button when the device is in Standby Mode and the mask is worn by the patient.
  - Drying** To initiate Drying Mode depress the **Ramp** button and press the **Power** button simultaneously. When in Drying Mode the blower runs at a low speed for 30 minutes. During Drying Mode the LED lights remain off and blower pressure is not regulated to provide therapy.
-



## Starting therapy

The Transcend control panel has two pushbuttons to activate the blower and the pressure ramp feature. There are also two LED lights, including a green LED for indicating normal operational modes and a yellow LED that indicates fault conditions.



1. Connect the Transcend to a power source and allow it to enter Standby Mode.
2. Be sure your mask is fit firmly in place before initiating therapy.
3. To initiate therapy press the Power button. Pressing the Power button when Transcend is in Standby Mode will initiate On Mode. Air flow will begin as the blower delivers or ramps to prescribed therapy pressure.

## Using the ramp function

The Ramp feature lets users acclimate to air flow by starting at a lower pressure and gradually increasing to the prescribed pressure setting as the user falls asleep. The minimum ramp pressure and ramp time are set by the clinician. If the Ramp feature was not set for you by a clinician, this feature will not be available to you.

To accelerate the rate of the pressure increase during Ramp, hold the Ramp button down until the device reaches a comfortable therapy pressure. When the Ramp button is released the device will continue in Ramp Mode until it reaches the prescribed therapy pressure.

1. Be sure the Transcend is in On Mode. If not, press the power button.
2. Adjust your mask to eliminate mask leaks.
3. Depress the Ramp button. The pressure will drop to the Ramp starting pressure as set by the clinician and will gradually increase over a preset length of time until reaching the prescribed therapy pressure.

**Note** Momentarily pressing the **Ramp** button during ramped pressure delivery will not affect the pressure delivered. To stop the gradual pressure increase of the ramp function, turn off the device by pressing the Power button. The next time the blower is turned on it will deliver the prescribed therapy pressure.

**Note** In the event of power loss during ramp, the Transcend will resume at the full prescribed pressure as soon as power is restored.

## Ending therapy

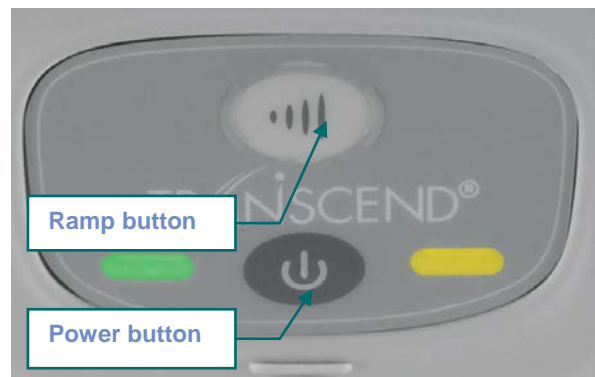
---

To end the delivery of therapy while the blower is on, press the **Power** button to deactivate the blower and return the device to Standby Mode. It is recommended the user initiate the Drying Mode function after each therapy session to dry the device interior.

## Drying mode

---

At the end of each therapy session it is recommended the user initiates the Drying Mode. To initiate Drying Mode depress the **Ramp** button and press the **Power** button simultaneously. When in Drying Mode the blower runs at a low speed for 30 minutes. During Drying Mode the LED lights remain off and blower pressure is not regulated to provide therapy. Using the Drying Mode flushes air through the system to remove traces of moisture from the interior of the device and airway circuit. After the 30-minute drying cycle, the blower will turn off and the device will automatically enter Standby Mode.



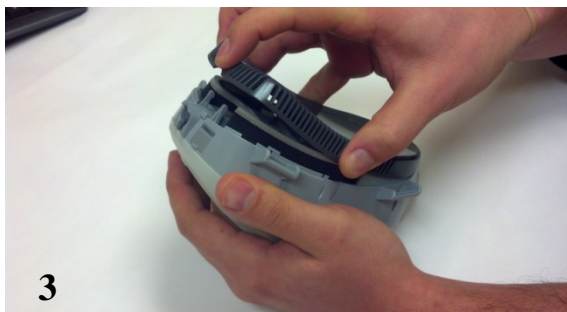
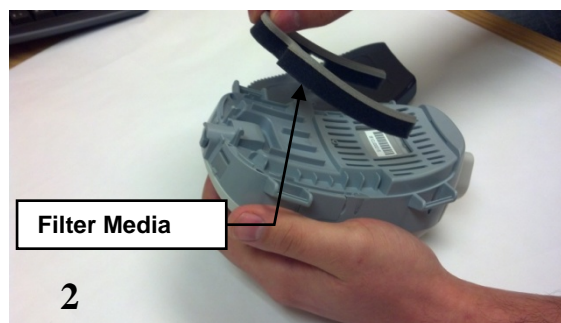
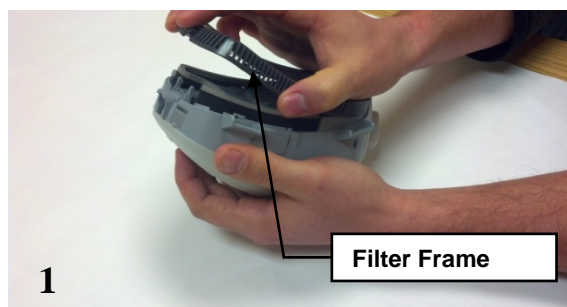
## Replacing the Filter Media

The Transcend Filter Media should be replaced every six months at minimum.

1. Remove the Filter Frame by gently pressing the button release at the back of the Filter Frame towards the front of the device. Then pull the filter frame away from the device.
2. To replace the Filter Media remove the used filter and discard. Lay a new Filter in the channel on the base of the Transcend device.
3. Reconnect the Filter Frame to the device by placing the front clip into place first. Once the front clip is in place snap the back clip into place. Make sure the Filter Frame is completely connected before use.

**Note:** If using an earlier generation of the Air Inlet Filter: Remove the Filter Frame (foam will be attached) and discard. Replace with a new earlier generation Filter Frame.

**Note:** Earlier generation Air Inlet Filters and Filter Frames are not compatible with later generation Transcend Systems.



# Caring for your Transcend and components

---

This section presents the following topics:

- **Cleaning the exterior**
- **Cleaning of accessories**
- **Cleaning the filter media and filter frame**

## **Warning:**

- Unplug the Transcend before cleaning.
- Do not submerge the Transcend or power supply in liquid.
- Prevent water from entering any openings of the device.
- Do not use harsh or abrasive cleaning agents to clean the device or any components.
- Do not attempt to sterilize the Transcend.
- Do not place cleaning materials, such as a cloth or liquid, into the device air inlet or air outlet connector.

## Cleaning the Exterior

---

Follow these instructions to clean the exterior of the Transcend device.

1. Unplug the power supply prior to cleaning and disconnect the device from power cords.
  2. Mix a solution of 5% mild liquid detergent in distilled water (1.6 fl oz liquid detergent per quart of distilled water). Mild detergent should contain biodegradable anionic surfactants and no phosphate.
  3. Submerge a lint-free cotton cloth into the detergent solution.
  4. Wring excess water from the cloth then wipe the exterior of the Transcend device for approximately 20 seconds using a gentle, back and forth wiping motion from the front to back of the device. Apply firm pressure and ensure contact with all accessible contact surfaces to adequately remove soil buildup.
  5. Rinse the cloth in clear water to remove residual cleaning solution.
  6. Wring excess water from the cloth then wipe the Transcend device using a gentle front to back wiping motion to remove any detergent solution remaining on its surface.
  7. Wipe the device with a dry, lint-free cotton cloth until the device is fully dry.
-

## Cleaning of Accessories

The following accessories should be cleaned with a 5% solution of mild liquid detergent in distilled water (1.6 fl oz liquid cleaning detergent per quart of distilled water). Mild detergent should contain biodegradable anionic surfactants and no phosphate. Follow these steps to clean the accessories.

Accessory	Periodic Cleaning Cycle	Product Lifetime
Transcend Base Station	2x/Month	2-Year

1. Dampen a lint-free cotton cloth with the cleaning solution.
2. Wring excess water from the cloth and thoroughly wipe each surface using a back and forth or circular wiping motion. Apply firm pressure and ensure contact with all accessible contact surfaces to adequately remove soil buildup.
3. Rinse the cotton cloth in distilled water to remove residual cleaning solution.
4. Wring excess water from the cloth then wipe the accessory to remove any cleaning solution remaining on its surface.
5. Dry surfaces by wiping with a dry, lint-free cotton cloth.
6. Be sure the accessory is fully dry before reassembling or using.

**Warning:** Do not allow water or detergent solution to enter the Base Station.

The following accessories can be fully submerged in the described cleaning solution. Follow the instructions below for proper cleaning.

Accessory	Periodic Cleaning Cycle	Product Lifetime
Headgear – H <sub>6</sub> B and H <sub>9</sub> M Systems	1x/Week	6-Month
Forehead Pad	1x/Week	6-Month
CPAP Unit Base Pad	1x/Week	6-Month
Mask Shell Assembly	1x/Week	3-Month
Universal Hose Adapter	Daily	3-Month
Air Supply Tube	Daily	3-Month

1. Fully immerse the accessory in the cleaning solution.
2. While immersed, thoroughly wipe the surface with a lint-free cotton cloth. Apply firm pressure and ensure contact with all accessible contact surfaces to adequately remove soil buildup.

3. Clean the inside of the air supply tube by lifting, then lowering the ends of the tube while the tube is filled with cleaning solution.
4. Rinse accessories by immersing in distilled water. Move the accessory in a back and forth motion for approximately 10 seconds to remove cleaning agent residue.
5. Rinse the air supply tube in distilled water by fully immersing. Lift, then lower, the ends of the tube while the tube is filled with water. Repeat this motion for approximately 10 seconds to remove cleaning agent residue.
6. Dry the accessory by wiping with dry, lint-free cotton cloth. Allow the accessory to air dry as needed.
7. Dry the outside of the air delivery tube with a dry, lint-free cotton cloth. Allow the tube to air dry until the inside of the tube is dry. Length of drying time will depend on ambient conditions.

**Note:** It is recommended that fabrics air dry at room temperature for 30-60 minutes prior to reassembly or use.

## Cleaning the Filter Media and Filter Frame

---

Clean the foam Filter Media and Filter Frame at least once per week. Follow these steps to clean:

1. Begin by removing the Filter Media and Filter Frame from the device (see **Replacing the Filter Media** for instructions on filter removal and replacement).
  2. Mix a solution of 5% mild liquid detergent in distilled water (1.6 fl oz liquid detergent per quart of distilled water). Mild detergent should contain biodegradable anionic surfactants and no phosphate.
  3. Fully immerse the **Filter Frame** in the detergent solution.
  4. While immersed, thoroughly wipe each surface of the Filter Frame with a lint-free cotton cloth. Apply firm pressure and ensure contact with all accessible contact surfaces to adequately remove soil buildup.
  5. Rinse the Filter Frame by immersing in distilled water and gently moving it forwards and backwards for approximately 10 seconds.
  6. Use a clean, dry, lint-free cotton cloth to dry all surfaces of the Filter Frame.
  7. To clean the **Filter Media**, first submerge a lint-free cotton cloth into the cleaning solution.
  8. Wipe the Filter Media with cloth to remove any visible residue. Wipe all surfaces for a minimum of 10 seconds.
  9. Rinse the cotton cloth in distilled water to remove residual cleaning solution.
-

10. Wring excess water from the cloth then wipe all surfaces of the Filter Media to remove any cleaning solution remaining on its surface.
11. Dry surfaces by wiping with a dry, lint-free cotton cloth.
12. Allow the Filter Media to air dry at room temperature for approximately 30-60 minutes before reassembly. Drying time will depend on ambient conditions.
13. Reconnect the Filter Media and filter frame to the Transcend.

**Note:** To clean an earlier generation Air Inlet Filter remove the Filter Frame (foam will be attached) and follow steps 2-6 above. Allow the Filter to air dry for 30-60 minutes. Drying time will depend on ambient conditions. Reattach the Air Inlet Filter to the CPAP.

# Fault, alert and reminder codes

## Fault codes

When Transcend encounters a fault the processor resets and enters a fault loop. In this loop, the device repeatedly flashes the yellow fault LED to indicate the specific fault encountered. If the device is reset or power cycled while in fault mode, it re-enters fault mode upon power up. To exit fault mode, the fault must be acknowledged by holding the power button down until the fault LED stops flashing. At this point, when the power button is released, the processor resets and the device powers up in standby mode.

Device LED	Fault LED	Error	Comments
Off	Flashes 2 times	Stack overflow	Internal software fault.
Off	Flashes 3 times*	Pressure too high	While delivering therapy, the pressure sensor measured a pressure greater than 30 cmH <sub>2</sub> O. This could be due to a "pinched" or disconnected pressure sense tube. This could also be due to faulty pressure sensor or electronics.
Off	Flashes 4 times*	No Pressure	While delivering therapy, the pressure sensor measured approximately 0 cmH <sub>2</sub> O. This could be due to an open output hose. This could also be due to a "pinched" or disconnected pressure sense tube. This could also be due to faulty pressure sensor or electronics.
Off	Flashes 6 times	Attempt to set invalid time	An attempt was made to set the device real time clock (RTC) to an invalid value. The device RTC is configured as part of the manufacturing process, thus this error should only occur then.
Off	Flashes 7 times*	Pressure sensor out of range	While in standby, the pressure sensor read a value outside its expected range. This could be due to a "pinched" or blocked pressure sense tube. This could also be due to faulty pressure sensor or electronics.
Off	Flashes 9 times	Bad firmware checksum	At power up, the device calculates a checksum of the firmware code and compares it against the checksum it calculated when it was initially programmed. This error indicates some part of the firmware has been corrupted. Likely causes would be electrostatic discharge or hardware problem.
Off	Flashes 11 times	Stalled blower	While delivering therapy, the device failed to detect any blower motion for 2 seconds. This is likely due to a faulty blower motor, loose blower connector or faulty electronics.
Off	Flashes 12 times	Low power	While delivering therapy, the device determined that the blower was stalled (see above). However, a check of the voltage indicates there may not be sufficient power to spin the blower. This is likely due to a faulty power supply or battery.
Off	Flashes 13 times*	Processor over-temp	The processor on-chip temperature sensor has reported an excessive temperature.
Off	Flashes 14 times*	Blower over-temp	The blower thermistor has reported an excessive temperature.

\* If this fault occurs, check all tubes and hoses to ensure that they are properly connected. If the fault occurred during therapy, make sure the mask is properly fitted and not leaking. Check that all filters are properly installed and not excessively dirty.



## Alert codes

---

Alerts are similar to faults but they do not reset the processor when they occur (i.e., the device continues to deliver therapy pressure).

Device LED	Fault LED	Error	Comments
Off	Flashes 15 times	Cannot regulate	Device repeatedly detected the monitored pressure outside of the therapy target range. The device attempts to continue to deliver therapy. The alert is an indication that filters and the mask should be inspected for cleanliness and proper fit.

## Filter Media change reminder

---

Every six months, the green LED flashes as a reminder that the Filter Media should be changed. The LED only flashes when the CPAP is in Standby Mode. The CPAP will continue to function normally. The reminder may be acknowledged in a manner similar to acknowledging a fault (hold down the power button until the green LED stops flashing). Acknowledging the reminder resets the reminder timer, that is it will flash again in six months. The reminder should be acknowledged in conjunction with changing the filter.

# Troubleshooting

Problem	Probable Cause	Solution
Discomfort due to a feeling of high pressure.	Transcend device pressure may be set too high.	Breathe slowly through your nose with your mouth closed. Use the ramp pressure, if available. If the pressure remains problematic, contact your homecare provider.
Nose or throat irritation.	Dry air.	Add humidity to the room. Contact your homecare provider.
	Dirty air filter.	Change and/or clean the Filter Media.
Transcend control panel LEDs don't flash or illuminate when power supply connected to DC input jack.	Power source is not properly connected.	Check all power connections.
	AC power may not be active.	Use another power outlet. Confirm outlet is not controlled by a wall switch.
No airflow from the Transcend.	Device motor failure; or, electronics failure.	Contact the homecare provider's technical service department.
Yellow fault LED flashes general fault warning sequence	Device detects an operating error.	Note the number of times the yellow fault LED flashes before the flash sequence repeats. Refer to <a href="#">Fault, alert and reminder codes</a> for possible correction. If error indication continues after taking corrective action by holding down the power button until the yellow fault led stops flashing, contact your homecare provider's technical service department.
Device shuts down during therapy	Improper seal of external hardware (mask, universal hose adaptor, tubing); or use of external hardware past recommended lifetime.	Secure all equipment to ensure a proper seal. Replace any external hardware exceeding recommended lifetime. If the problem persists, call your homecare provider's technical service department.

## Appendix: Part numbers

This section presents three topics:

- [Disposable parts](#)
- [Accessories](#)
- [Replacement parts](#)

### Disposable parts

Item	Part number	Item	Part number
Air Inlet Filter (earlier generation)	503003	Base Pad (optional)	503009
Filter Media	503067	Transcend Filter Frame	503071
Heat Moisture Exchanger (HME) (optional)	503008	Forehead Pad	503010

### Accessories

Item	Part number	Item	Part number
Transcend H <sub>6</sub> B Waterless Humidification System	303005	Battery Arm Band	503027
Transcend H <sub>9</sub> M Waterless Humidification System	303006	Battery Pouch, P <sub>8</sub> Battery	503025
Transcend P <sub>8</sub> Multi-Night Battery (BAT8)	503023	Battery Pouch, P <sub>4</sub> Battery	503028
Transcend P <sub>4</sub> Overnight Battery (BAT4)	503026	Base Station	503033
Mobile Power Adapter (MPA1)	503029	LCD Programming Base Station	503055
Battery Chest Strap	503024	Portable Solar Charger	503056

### Replacement parts

Item	Part number	Item	Part number
Transcend	503042	Mask Shell Assembly	503034
Transcend H <sub>6</sub> B Headgear	503040	Adjustment Arm Bars Set of 3: S, M, L	503036
Transcend H <sub>9</sub> M Headgear	503007	Forehead Piece	503037
Headgear Ball Clips	503011	Transcend H <sub>9</sub> M Hose	503038
Transcend Travel Bag	503012	Transcend H <sub>6</sub> B Hose	503039
Mirage Activa Adaptor Ring – S	503018	Universal Hose Adaptor	503043
Mirage Adaptor Ring – M/L	503014	Shell Adaptor Variety Pack	503044
Ultra Mirage II Adaptor Ring	503015	Multi-plug Universal Power Supply (PSA2)	503059
ComfortGel Adaptor Ring – S/M	503016	Changeable Plug Pack	503060
		ComfortGel Adaptor Ring - L	503017

# Appendix: Specifications

---

This section presents the following topics:

- [Transcend](#)
- [AC power supply - PSA2](#)
- [Mobile power adaptor \(optional\) - MPA1](#)
- [Batteries](#)
- [Transcend performance](#)
- [Manufacturer's declaration](#)

## Transcend

---

Transcend weight:	Less than 1.0 lbs (454 gm)
Transcend dimensions:	6.1 in x 3.5 in x 2.8 in (15.4 cm x 8.9 cm x 7.0 cm)
Air outlet connector port dimensions:	19-mm diameter proprietary connector
Universal Adaptor port dimensions:	22-mm diameter connector

## AC power supply - PSA2

---

AC supply input:	100-240 VAC, 50-60Hz
AC supply output:	19VDC, 2.6 Amp

## Mobile power adaptor (optional) - MPA1

---

Mobile power adaptor input:	13.5 VDC nominal. 12 to 15.5 VDC, 7.0 Amp
Mobile power adaptor output:	19.2 DVC, 3.91 Amp

## Batteries (optional) - BAT4, BAT8

---

Transcend P <sub>8</sub> Multi-night Battery:	14.4 VDC, 5,200 mAh
Transcend P <sub>4</sub> Overnight Battery:	14.4 VDC, 2,600 mAh

---

## Transcend performance

---

Working pressure range:	4 to 20 cm H <sub>2</sub> O
Accuracy of pressure setting:	±1 cm H <sub>2</sub> O or ±10%, whichever is greater
Maximum system shutdown pressure:	30 cm H <sub>2</sub> O
Ramp time duration:	0-45 min + 25% time variance
Operating temperature range:	32 to 122°F (0 to 50°C)
Storage/transport temperature range:	-4 to 140°F (-20 to 60°C)
Operating humidity range:	10% to 80% relative humidity, non-condensing
Storage/transport humidity range:	10% to 90% relative humidity, non-condensing
Altitude range:	0-8000 feet (automatically adjusted)

---

## Manufacturer's declaration

This section presents the following topics:

- [Electromagnetic emissions](#)
- [Electromagnetic immunity](#)
- [IEC 60601-1 Compliance](#)

### Electromagnetic emissions


The Transcend system is intended for use in the electromagnetic environment specified below. The customer or the user of the system should ensure that it is used in such an environment.

Emissions test	Compliance	Electromagnetic environment—guidance
RF radiated emissions CISPR 11	Group 1	The Transcend system uses RF energy only for its internal function. Therefore, its RF emissions are very low and are not likely to cause any interference in nearby electronic equipment.
RF conducted emissions CISPR 11	Class B	The Transcend system is suitable for use in all establishments, including domestic establishments and those directly connected to the public low-voltage power supply network that supplies buildings used for domestic purposes.
Harmonic emissions IEC 61000-3-2	Class A	
Voltage fluctuations/ flicker emissions IEC 61000-3-3	Complies	

### Electromagnetic immunity

The Transcend system is intended for use in the electromagnetic environment specified below. The customer or the user of the system should ensure that it is used in such an environment.

Immunity test	IEC 60601 test level	Compliance level	Electromagnetic environment—guidance
Electrostatic discharge (ESD) IEC 61000-4-2	±2, 4, 6 kV contact  ±8 kV air	N/A. The Transcend system does not have conductive surfaces.  ±2, 4, 6, 8 kV air	Floors should be wood, concrete, or ceramic tile. If floors are covered with synthetic material, the relative humidity should be at least 30%.
Electrical fast transient/burst IEC 61000-4-4	±2 kV for power supply lines  ±1 kV for input/output lines	±2 kV for power supply lines  ±1 kV for input/output lines	Line power quality should be that of a typical commercial or hospital environment.

Immunity test	IEC 60601 test level	Compliance level	Electromagnetic environment—guidance
Surge IEC 61000-4-5	±1 kV differential mode ±2 kV common mode	±0.5*, 1 kV differential mode ±2 kV common mode	Line power quality should be that of a typical commercial or hospital environment.
Voltage dips, short interruptions, and voltage variations on power supply input lines IEC 61000-4-11	<5% $U_T$ (>95% dip in $U_T$ ) for 0.5 cycle 40% $U_T$ (60% dip in $U_T$ ) for 5 cycles 70% $U_T$ (30% dip in $U_T$ ) for 25 cycles <5% $U_T$ (>95% dip in $U_T$ for 5 sec)	<5% $U_T$ (>95% dip in $U_T$ ) for 0.5 cycle 40% $U_T$ (60% dip in $U_T$ ) for 5 cycles 70% $U_T$ (30% dip in $U_T$ ) for 25 cycles <5% $U_T$ (>95% dip in $U_T$ for 5 sec)	Linepower quality should be that of a typical commercial or hospital environment. If the user of the Transcend system requires continued operation during power line interruptions, it is recommended that the Transcend system be powered from the battery. <b>Note</b> $U_T$ is the A.C. line voltage before application of the test level.
Power frequency (50/60 Hz) magnetic field IEC 61000-4-8	3 A/m	3 A/m	Power frequency magnetic fields should be at levels characteristic of a typical commercial or hospital environment.
Conducted RF IEC 61000-4-6	3 Vrms 150 kHz to 80 MHz	3 Vrms 10 KHz to 100 MHz*	Recommended separation distance: $d = 1.17\sqrt{P}$
Radiated RF IEC 61000-4-3	3 V/m 80 MHz to 2.5 GHz	10 V/m (compliance level adjusted to meet FDA limits) 26 MHz to 2.5 GHz <b>Note</b> At 80 MHz and 800 MHz, the higher frequency range applies.	Recommended separation distance: $d = 0.35\sqrt{P}$ 80 MHz to 800MHz Recommended separation distance: $d = 0.70\sqrt{P}$ 800MHz to 2.5 GHz where $P$ is the maximum output power rating of the transmitter in watts ( $W$ ) according to the transmitter manufacturer and $d$ is the recommended separation distance in meters (m). Field strengths from fixed RF transmitters, as determined by an electromagnetic site survey, should be less than the compliance level in each frequency range. Interference may occur in the vicinity of equipment marked with the following symbol: 

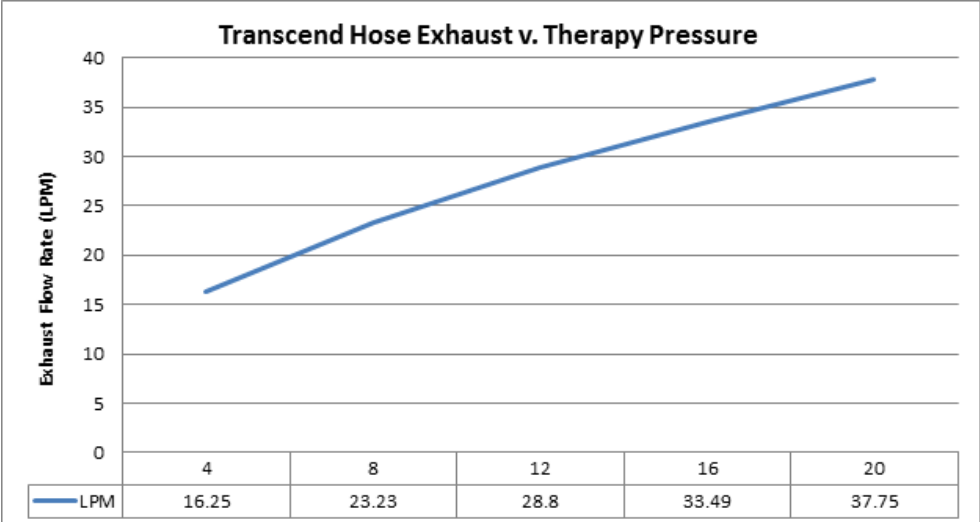
## IEC 60601-1 compliance

Protection against electric shock:	Class II
Degree of protection against ingress of water:	Type BF IP22
Use of flammable gasses:	Equipment not suitable for use in the presence of a flammable anesthetic mixture with air or oxygen, or with nitrous oxide.

## Interface physical characteristics

Interface (shell/seal) weight:	0.14 lbs (62 g)
Seal dead space	Less than 301 cc
9" Transcend hose dimensions:	16-mm diameter, 20 cm long
6' Transcend hose dimensions:	16-mm diameter, 1.9 m long
6' Standard hose dimensions:	21-mm diameter, 1.8 m long

## Performance

Sound power level (@ 10cm H <sub>2</sub> O pressure, static)	37.0 dB												
Sound pressure level (@ 10cm H <sub>2</sub> O pressure, static)	29.0 dB												
Resistance to flow of the mask and application accessories	0.140 hPa (cm H <sub>2</sub> O) @ 50 l/min 0.278 hPa (cm H <sub>2</sub> O) @ 100 l/min												
Working pressure range:	4 to 20 cm H <sub>2</sub> O												
Pressure limit:	30 cm H <sub>2</sub> O												
Vent flow rate curve:	 <p style="text-align: center;"><b>Transcend Hose Exhaust v. Therapy Pressure</b></p> <table border="1" style="margin-left: auto; margin-right: auto;"> <thead> <tr> <th></th> <th>4</th> <th>8</th> <th>12</th> <th>16</th> <th>20</th> </tr> </thead> <tbody> <tr> <td>— LPM</td> <td>16.25</td> <td>23.23</td> <td>28.8</td> <td>33.49</td> <td>37.75</td> </tr> </tbody> </table>		4	8	12	16	20	— LPM	16.25	23.23	28.8	33.49	37.75
	4	8	12	16	20								
— LPM	16.25	23.23	28.8	33.49	37.75								



Maximum flow rate (typical)		<b>Test Pressures</b>				
		<b>4 cm H<sub>2</sub>O</b>	<b>8 cm H<sub>2</sub>O</b>	<b>12 cm H<sub>2</sub>O</b>	<b>16 cm H<sub>2</sub>O</b>	<b>20 cm H<sub>2</sub>O</b>
	Measured pressure at the patient connection port (hPa)	3.1	7.0	11.0	15.0	19.0
	Average flow at the patient connection port (l/min)	71.91	75.45	74.29	73.24	71.49
HME moisture loss	<b>Test condition</b>					
	<b>Tidal volume (ml)</b>	<b>Breath rate (1/min)</b>		<b>Moisture loss (mg/L)</b>		
	1000	10		18.5		
	750	12		18.6		
	500	15		15.6		
	250	20		12.2		
HME pressure drop v. flow -	<b>Flow rate (L/min)</b>	<b>Insp. pressure drop (hPa)</b>		<b>Exp. pressure drop (hPa)</b>		
Initial	30	0.13		0.13		
	60	0.43		0.43		
	90	1.00		0.93		
After 24 hours	30	0.17		0.17		
	60	0.50		0.47		
	90	1.10		1.07		
Internal volume	8.59 cm <sup>3</sup>					

## Appendix: Limited warranty

---

Somnetics warrants the Transcend System units to be free of defects in materials and workmanship and will perform in accordance with the product specifications for a period of 2 years from the date of sales by Somnetics to the dealer. The Transcend P4 Overnight™ and P8 Multi-night™ battery packs are warranted for a period of 9 months from the date of sale by Somnetics to the dealer.

If the product fails to perform in accordance with the product specifications, Somnetics will repair or replace, at its option, any materials or parts of the Transcend System, which, upon Somnetics' examination appear defective. This does not cover damages caused by accident, misuse, abuse, alteration, and other defects not related to material or workmanship. Somnetics will pay customary freight charges from Somnetics to dealer location only.

Somnetics disclaims all liability for economic loss, loss of profits, overhead, or consequential damages which may be claimed to arise from any sale or use of this product. Some states do not allow the exclusion or limitation of incidental or consequential damages, so the above limitation or exclusion may not apply to you.

This warranty is given in lieu of all other express warranties. In addition, any implied warranties, including warranty of merchantability or fitness for the particular purpose are limited to two years. Some states do not allow the exclusion or limitation of incidental or consequential damages, so the above limitation or exclusion may not apply to you. This warranty gives you specific legal rights, and you may also have rights which vary from state to state.

To qualify for repair, replacement, or refund, the defective device must be returned to Somnetics within 30 days after the discovery of the defect. Any repair, replacement, or refund obligation would not apply if the device has been repaired or otherwise altered in a facility not authorized in writing by Somnetics. To exercise your rights under this warranty, contact your local, authorized Somnetics dealer or Somnetics at 33 5th Avenue, New Brighton, Minnesota 55112 USA, 1.877.621.9626 or 1.651.621.1800.

Somnetics International, Inc.  
33 5th Avenue NW, Suite 500  
New Brighton, Minnesota 55112 USA

<http://www.mytranscend.com/>

Phone: 651.621.1800

Toll-free: 877.621.9626

Fax: 651.204.0064

Transcend Sleep Apnea Therapy System User Manual

**REF** 103084 Rev J